

# PROCESS PUMP & SEAL, INC.

## PROCESS SOLUTION SPECIALISTS

*Since 1984.... Technically and Successfully Serving Industry for over 33 years*

Introducing our **Expanded** Pump Repair Shop,  
**Advanced** Machining Center and  
**Expanded** Field Service Division!

*How can we help and assist you?*



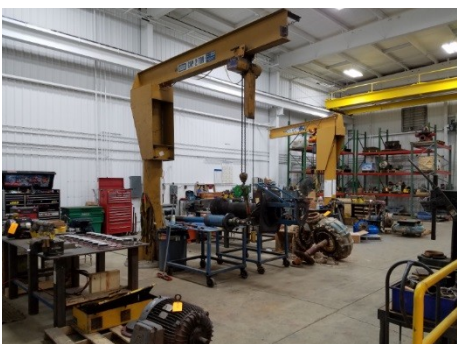
### **Newly Expanded Pump**

- 1 Large Overhead Crane-capacity, building span of shop)
- (2 ea.) 2 ton Contrx Jib
- Paint Room
- Blast Room and Cleaning Equipped)



### **Repair Shop**

Robbins & Meyers, 5 ton structured for 10 ton (Covers full  
Cranes - (Covers 5 work stations)  
(Exhaust and Evacuator



- Clean Air Room (Exhaust and Evacuator Equipped Specialized Coatings)
- Main Shop - 9,000 square feet





## New Machining Center

- (2 ea.) 2 ton overhead cranes (for metal stock)
- Garutzpe "Time Master" Manual Lathe- 120" length max travel, 25.000" swing with a 9.250" through hole
- Okuma 1420 CNC Horizontal Lathe- Fully Automated, 48.000" travel, 14.250" swing, Master Cam System Programmable with Auto Cad fully integrated.
- Miltronics Centurion 6, CNC Vertical Mill, Fully Automated, Master Cam System Programmable with Auto Cad fully integrated (X=40.000", Y=24.000", Z=24.000", 20 pocket tool changer)
- Hines Industrial Balancing Machine- ISO 1940-1941 Specification, Grade 2.5 or better, 4W/N
- 36 diameter max, 500 lbs. maximum
- Supermax Model XCM-16VS Manual Vertical Mill (X-36.000" Y-16.000")
- Allen- Drill Press, 45" table, cooled
- Cincinnati O.D. Grinder 36.000 length" x 18.000" diameter
- Chevalier Surface Table Grinder (10.000" x 20.000")
- WF Wells Horizontal Saw - 15.000" vertical travel x 15.000" wide cut, cooled



## Expanded Field Service Division

- On-Site Field Service Technicians available for projects, installs and additional manpower
- 5 service trucks; 1 Ford, F-800 Flat Bed 17 foot
- (2 ea.) Full service trucks with cranes (4WD). Complete Push/Pull
- Each service truck is stocked independently with its own tools and alignment machines (complete with Ventura Cranes up to 5,000 lbs. capacity and 10' – 20' boom)
- Alignment Equipment- We use the ROTALIGN ULTRA and the OPTALIGN
- Extech Thermography Equipment and Vibration Equipment

# **PROCESS PUMP & SEAL, INC.**

## **PROCESS SOLUTION SPECIALISTS**

Corporate Office  
2993 Woodsdale Road  
Trenton, OH 45067  
Phone: (513) 988-7000  
Fax: (513) 988-7007

Pump Repair and Machine Center  
2601 South Verity Parkway  
Building 30  
Middletown, OH 45044  
Phone: (513) 988-7000  
Fax: (513) 988-7007

Technical Sales Office  
1641 Pine Hollow Road  
McKees Rocks, PA 15136  
Phone: (412) 458-3226  
Fax: (412) 458-3728

Toll Free (800) 582-4500  
[www.processpumpandseal.com](http://www.processpumpandseal.com)